

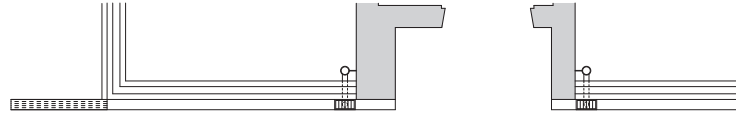
B
TYPE
BASIC

2LDK+WIC+SIC

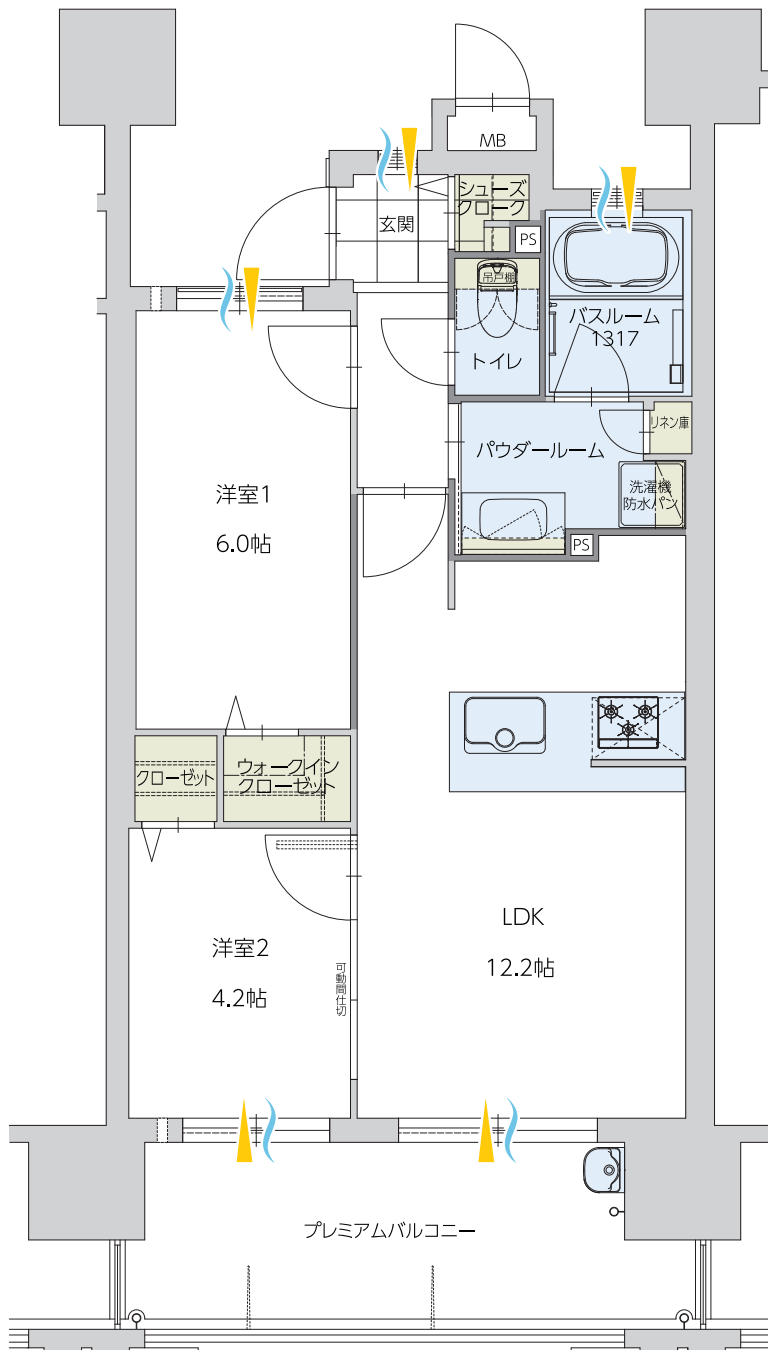
専有面積 / 50.57 m² (15.29 坪)

バルコニー面積 / 11.40 m² (3.44 坪)

15F	A	B	C	D	E	F
14F	A	B	C	D	E	F
13F	A	B	C	D	E	F
12F	A	B	C	D	E	F
11F	A	B	C	D	E	F
10F	A	B	C	D	E	F
9F	A	B	C	D	E	F
8F	A	B	C	D	E	F
7F	A	B	C	D	E	F
6F	A	B	C	D	E	F
5F	A	B	C	D	E	F
4F	A	B	C	D	E	F
3F	A	B	C	D	E	F
2F	A	B	C	D	E	F
1F	ENT	B	C	D	E	F
		PARKING				



外部廊下



...収納

...水回り

...通風・採光

